



**Edenfield Road
Rochdale OL11 5YY
OFFERS INVITED IN THE REGION OF £325,000**

ADAMSONS BARTON KENDAL are delighted to offer for sale, this well presented 3 bedroomed detached family home, set in extensive gardens to the rear with a front driveway providing off street parking. The property benefits from quality fixtures and fittings throughout and has 2 spacious reception rooms, a kitchen and utility area to the ground floor with 3 bedrooms and 2 bathrooms at first floor.

The property benefits from a gas fired central heating system and double glazed windows and there is also the potential to extend the property above the garage, subject to appropriate permissions being obtained.

The property is offered for sale at a competitive price and early viewing comes highly recommended to appreciate the extent and quality of the accommodation on offer.

THE ACCOMMODATION COMPRISES:

(Measurements are approximate to the nearest 0.1m and for guidance only and they should not be relied upon for the fitting of carpets or the placement of furniture). No checks have been made on any fixtures and fittings or services where connected (water, electricity, gas and drainage) heating appliances or any other electrical or mechanical equipment in this property).

Ground Floor

ENTRANCE HALLWAY

Quality flooring, storage cupboard under the stairs, spindle staircase to first floor

Through LOUNGE

5.4 x 4.0 metres (17'8" x 13'1")

Feature fireplace with electric fire, double glazed patio doors leading out to the rear garden area covings to ceiling

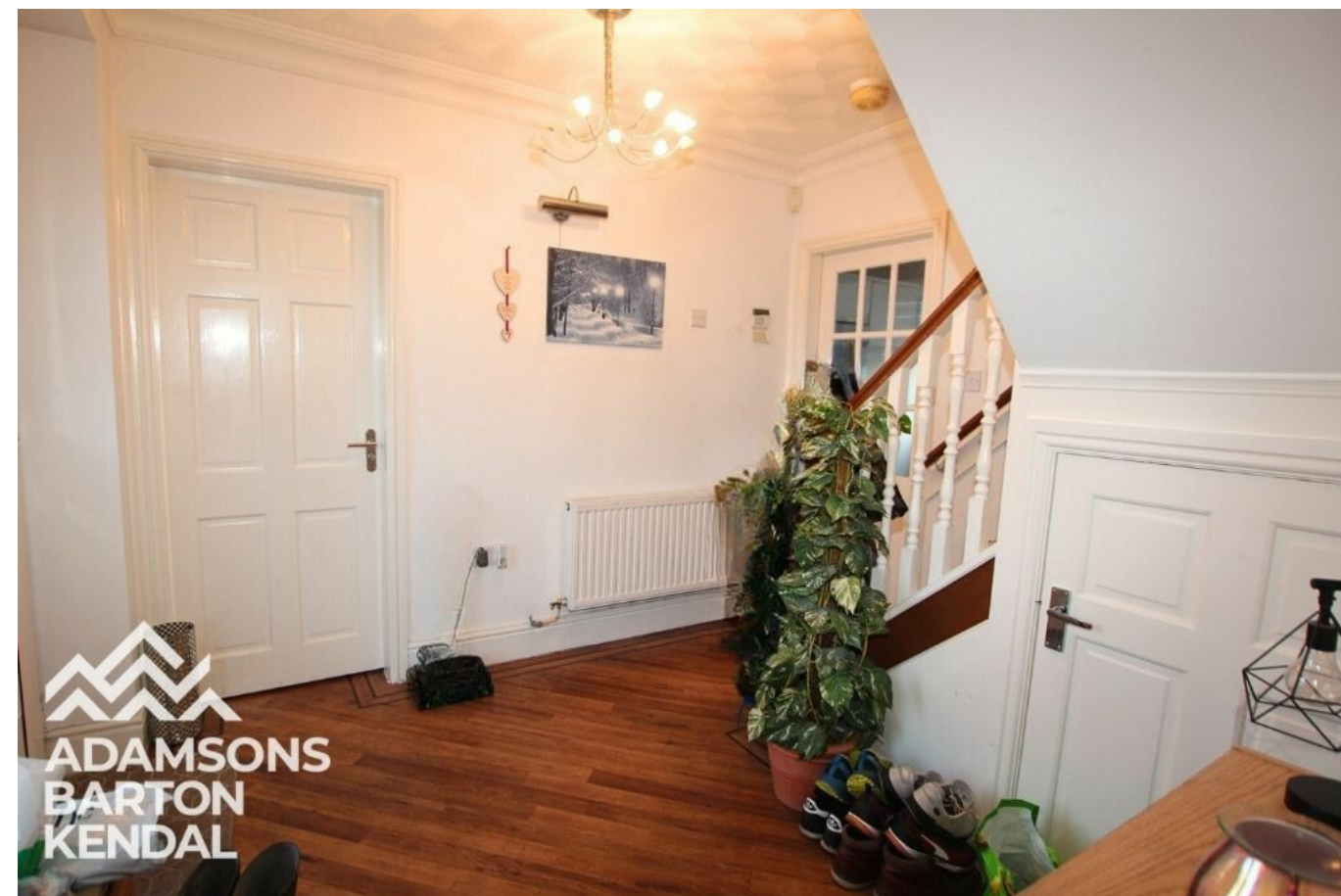
Second LOUNGE

4.6 x 4.8 metres (formerly the double garage) (15'1" x 15'9")

Spotlights to ceiling

VANITY ROOM

Low level wc, wash hand basin, part tiled walls



Edenfield Road, Rochdale OL11 5YY



Edenfield Road, Rochdale OL11 5YY

KITCHEN

4.4 x 2.4 metres (14'5" x 7'10")

1 ½ bowl stainless steel sink unit, range of modern wall and base units with built in oven, hob and extractor hood, integrated 'American Style' fridge/freezer, spotlights to ceiling

UTILITY AREA

1.4 x 1.5 metres (4'7" x 4'11")

Plumbing for automatic washing machine and dryer



Edenfield Road, Rochdale OL11 5YY

First Floor

LANDING

MASTER BEDROOM

4.2 x 3.3 metres (13'9" x 10'9")

A spacious double bedroom with a range of fitted wardrobes

EN-SUITE SHOWER ROOM

3.3 x 1.1 metres (10'9" x 3'7")

Shower cubicle, low level wc, wash hand basin, quality flooring, part tiled walls, spotlights to ceiling

BEDROOM TWO

3.1 x 3.0 metres (10'2" x 9'10")

A spacious double bedroom with a range of fitted wardrobes and bedroom furniture

BEDROOM THREE

3.0 x 2.3 metres (9'10" x 7'6")

Family BATHROOM

2.4 x 2.2 metres reducing to 1.2 metres (7'10" x 7'2" reducing to 3'11")

Panelled bath with shower above, pedestal wash hand basin, low level wc - matching suite in white, part tiled walls



Edenfield Road, Rochdale OL11 5YY



Edenfield Road, Rochdale OL11 5YY

Externally

There is a front driveway providing off street parking and a large rear garden with extensive stone patio area.

Additional Information

Energy Performance - TBC

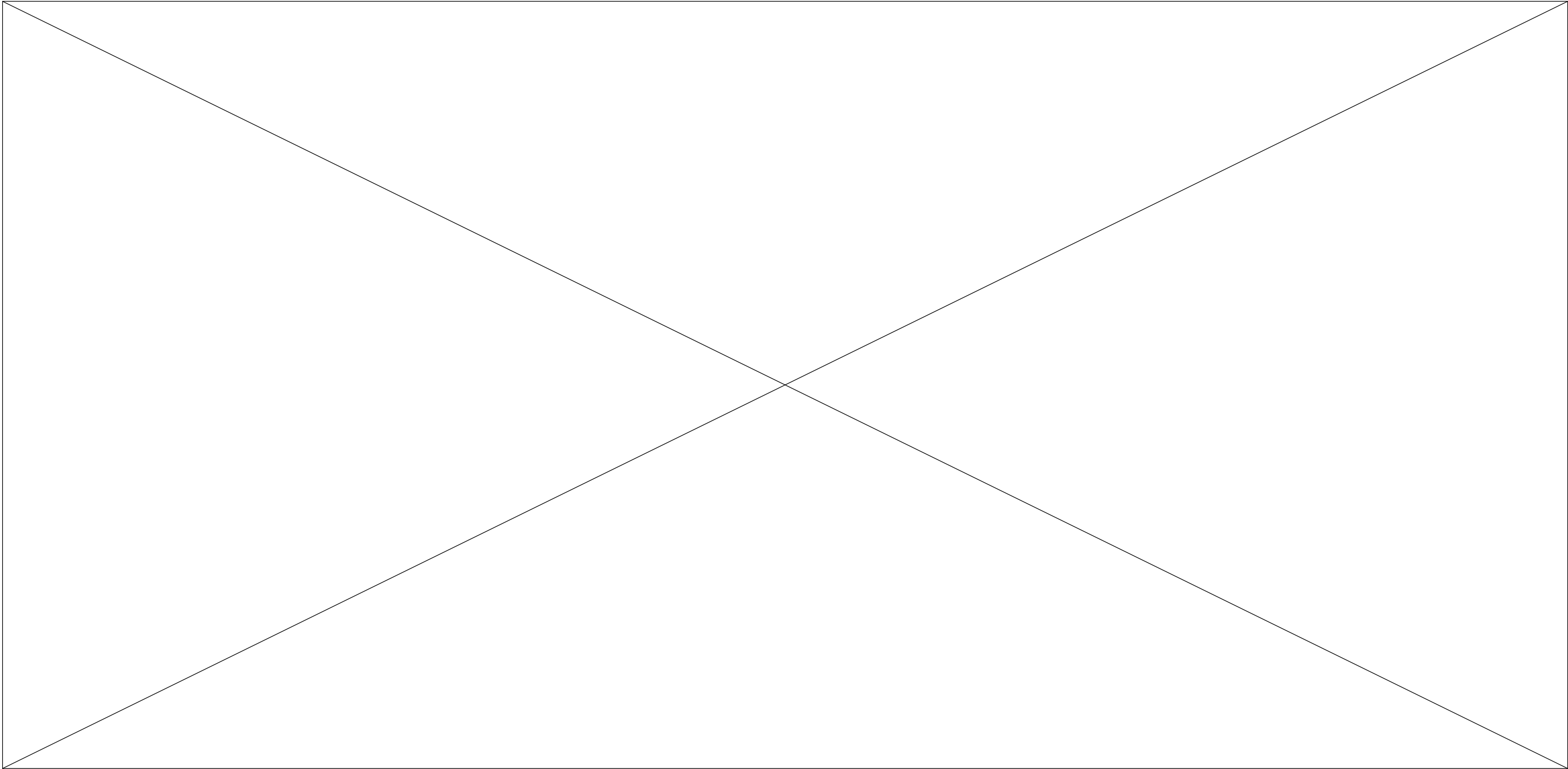
Council Tax Band - D

Tenure - Freehold



Edenfield Road, Rochdale OL11 5YY

VIEWING STRICTLY BY APPOINTMENT WITH SOLE AGENTS ADAMSONS BARTON KENDAL



w - abkproperty.co.uk e - sales@abkproperty.co.uk

Adamsons Barton Kendal for themselves and for the vendors or lessors of this property whose agents they are, give notice that (i) the particulars are set out as a general outline only for the guidance of intending purchasers or lessees, and do not constitute, nor constitute part of an offer or contract; (ii) all descriptions, dimensions, references to condition and necessary permission for use and occupation, and other details are given without responsibility and any intending purchasers or tenants should not rely on them as statements or representations of fact but must satisfy themselves by inspection or otherwise as to the correctness of each of them; (iii) no person in the employment of Adamsons Barton Kendal has any authority to make or give any representations or warranty in relation to this property.

Due to a change in the legislation as from 1st March 2004 we are required to check your identification. This is a legal requirement and applies to all Estate Agents: (i) proceeding to market any property; and (ii) should you make an offer on one of our properties and this offer becomes acceptable, before we can instruct Solicitors to proceed with the transaction. Suitable identification can be: Current signed Passport; New style Driving Licence with photograph; Inland Revenue Tax notification